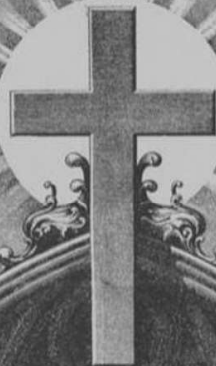


Class E Five Man Asylum Drill Manual



IN HOC SIGNO VINCES



Grand Commandery of Knights Templar of Florida

Class E Asylum Drill

Instruction Manual

Introduction

Sir Knights of Florida, this manual introduces Class E Drills, designed to foster camaraderie and teamwork among Knights and Commanderies. These drills are optional and distinct from the competitive Class A-D teams recognized by the Grand Encampment Knights Templar USA. Class E Drills aim to enhance fellowship, confidence, tactics, and swordsmanship while supporting Commanderies with low attendance. Requiring four Knights and a Captain (from different Commanderies if needed), these drills can supplement business meetings and encourage friendly inter-Commandery collaboration. Drill remains a vital Templar tradition, offering enjoyment for participants and spectators alike. Additionally, forming a Class D team for national competition is encouraged.



FLORIDA COMMANDERY CLASS E ASYLUM DRILL

When the judges are ready and the chief Judge is in place, the team Captain will prepare his team in the drill competition area. The result of this preparation will be that the team is on line facing the chief Judge with the Captain at the center and three paces in front of his team. The Captain will bring his team to Present Swords, face and exchange Salute Swords with the chief Judge, and report his team ready for competition. After comments from the Judge and the exchange of Sword Salutes, the Captain faces the team and commands Carry Swords. The judging now begins.

Seq	Par	Commands
1	65	Right Step, March
2	65	Commandery, Halt
3	65	Left Step, March
4	65	Commandery, Halt
5	65	Backward, March
6	65	Commandery, Halt
7	62	Mark Time, March
8	63	Half Step, March
9	64	Forward, March
10	209	Twos Right About, March, Guide Left
11	209	Twos Left About, March, Guide Right
12	67	Commandery, Halt
13	197	Twos Left, March
14	200	Column Right, March
15	70	Change Step, March
16	62	Mark Time, March
17	59	Forward, March
18	200	Column Right, March
19	200	Column Right, March
20	233	Twos In Circle, Right Wheel, March, Guide Right
21	207	Right Front Into Line, March, Commandery, Halt, Front
22	194	Left Wheel, March, Forward, March, Guide Right
23	194	Left Wheel, March, Forward, March, Guide Right
24	198	Left by Twos, March
25	306	Right In Front, In Circle Right Wheel, March, Guide Left
26	200	Column Left, March
27	200	Column Left, March
28	227	Open Order, March
29	67	Commandery, Halt
30	52	Inward, Face
31	119	On, Guard
32	121	Parry, Four
33	123	Carry, Swords
34	126	Form Arch of Steel, Cross, Swords
35	126	Carry, Swords
36	124	Wield, Swords
37	125	Carry, Swords
38	65	Left and Right Step, March
39	67	Commandery, Halt
40	52	Right and Left, Face
41	228	Forward, Close Order, March
42	200	Column Right, March

- 43 200 Column Right, March
- 44 200 Column Right, March
- 45 205 On Right Into Line, March, Commandery, Halt, Front
- 46 220 Front Open Files, March, Guide Right, Commandery, Halt

SWORD MANUAL

- | Seq | Par | Commands |
|-----|-----|--------------------------------------|
| A | 112 | Sir Knights, Return, Swords |
| B | 85 | Sir Knights, Draw, Swords |
| C | 90 | Salute, Swords |
| D | 91 | Carry, Swords |
| E | 88 | Present, Swords |
| F | 89 | Carry, Swords |
| G | 108 | Inspection, Swords |
| H | 89 | Carry, Swords |
| I | 96 | Swords, Port |
| J | 97 | Carry, Swords |
| K | 94 | Support, Swords |
| L | 95 | Carry, Swords |
| M | 92 | Order, Swords |
| N | 130 | Un Cover |
| O | 131 | Re Cover |
| P | 49 | Stand at Ease |
| Q | 50 | Commandery, Attention |
| R | 93 | Carry, Swords |
| S | 102 | Reverse, Swords |
| T | 103 | Carry, Swords |
| U | 109 | Invert, Swords |
| V | 110 | Carry, Swords |
| W | 111 | Guide, Swords |
| X | 111 | Carry, Swords |
| Y | 128 | Charge, Swords |
| Z | 129 | Carry, Swords |
| AA | 106 | Parade, Rest |
| BB | 107 | Commandery, Attention, Carry, Swords |

END SWORD MANUAL

- 47 221 Front Into Line, March, Right Dress, Front
- 48 197 Twos Left, March
- 49 200 Column Right, March
- 50 204 Twos Right, March
- 51 194 Left Wheel, March, Forward, March, Guide Right
- 52 209 Section Left About, March, Guide Right
- 53 67 Commandery, Halt
- 54 286 Twos in Circle, Right Wheel, March, Section in Circle, Left Wheel, March, Commandery Halt, Left Dress, Front
- 55 88 Present, Swords

The judging now ends. The Captain will face about and exchange Sword Salutes with the chief Judge. After comments from the Judge and the exchange of Sword Salutes, the Captain faces the team and commands Carry Swords. The Captain will then cause his team to retire from the drill competition area.

**SWORD MANUAL
SPECIFICALLY FOR
CLASS "E" DRILL ROUTINE**

(illustrations are beside the descriptive paragraph, when applicable)

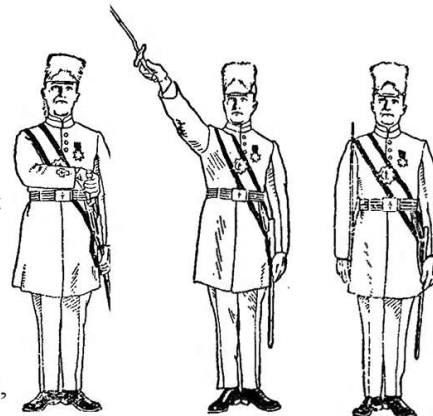
**Seq. A - 112. 1. Sir Knights, 2. Return,
3. SWORDS,**

At the command return, seize the scabbard near the mouth with the left hand, inclining it a little forward, and keeping the right hand near the body, drop the sword blade forward and to the left so that the point is about six inches from the floor and pointing to a line which is a prolongation of the left foot. Move the sword hand to the left, then raise the hand, drawing the sword blade between the first two fingers of the left hand. Insert the point of the blade in the mouth of the scabbard, edge to the front, assisted by the thumb and fingers of the left hand, eyes to the front, thrust the blade into the scabbard until the right arm is horizontal (first motion of draw). (Par. 85.) (SWORDS) Return the blade smartly and drop the hands to the sides. **NOTE**-In inserting the point avoid turning the scabbard to meet the sword.



**Seq. B – 85. 1. Sir Knights, 2. Draw, 3.
SWORDS.**

At the command DRAW, grasp the scabbard with the left hand, near its mouth, incline the hilt a little forward, seize the gripe with the right hand, and draw the blade until the right forearm is horizontal, back of hand against the breast. SWORDS, draw the sword quickly, raising the arm to its full length, at an angle of about 45 degrees, the sword in a straight line with the arm, edge down, extending in the same direction as the right foot. (TWO) Bring the back of the blade against the shoulder, the blade vertical, back of the gripe to the rear, the arm nearly straight down, the thumb and forefinger embracing the gripe, the thumb against the thigh, the other



fingers extended and joined in the rear of the gripe. This is the position of Carry Swords. From this position all movements of the sword manual begin, unless otherwise provided.

In all marching movements, except route march, at the command halt, unless otherwise provided, the sword, if drawn, will be brought to the carry without command.

Seq. C - 90. 1. Salute, 2. SWORDS.

Execute present swords. (TWO) Drop the point or the sword, edge to the left, to about fifteen inches in front of and in prolongation to the right foot, arm hanging naturally, the elbow close to the body, and the back of the hand down.



Seq. D - 89. 1. Carry, 2. SWORDS.

Resume the carry In one motion, without throwing the right hand to the front, or the point to the rear. **NOTE** – See picture at the end of Seq. B.

Seq. E - 88. 1. Present, 2. SWORDS.

Raise and carry the sword to the front, cross the hilt as high as the chin and six inches in front of the neck, edge to the left, point six inches farther to the front than the cross hilt, thumb extended on the back of the gripe, wrist straight, all fingers grasping the gripe.



Seq. F - 89. 1. Carry, 2. SWORDS.

Resume the carry in one motion, without throwing the right hand to the front, or the point to the rear. **NOTE** – See picture at the end of Seq. B.

Seq. G - 108. 1. Inspection, 2. SWORDS.

Execute present swords, and turn the wrist to show both sides of the blade, resuming the carry when the inspector has passed. (No picture)

Seq. H - 89. 1. Carry, 2. SWORDS.

Resume the carry in one motion, without throwing the right hand to the front, or the point to the rear. **NOTE** – See picture at the end of Seq. B.

Seq. I - 96. 1. Swords, 2. PORT.

Seize the blade in front of the right shoulder with the fingers and thumb of the left hand, the thumb to the rear, the left elbow close to the body. (TWO) With the left hand bring the sword diagonally across and about one inch in front of the body, edge down, the left hand at the height of the left shoulder, the thumb extended along the blade, the fingers closed, back of the hand down, the right hand grasping the hilt and nearly in front of the right hip.



Seq. J - 97. 1. Carry, 2. SWORDS.

Bring the sword to the carry with both hands, the left hand as high as the right shoulder, pressing the blade to its place, the fingers and thumb extended and joined in front of the blade, the elbow near the body. (TWO) Drop the left hand to the side.



Seq. K - 94. 1. Support, 2. SWORDS.

Bring the sword to the position of present. (Seq. E - Par. 88.) (TWO) Carry the sword vertically to the left side, lowering the right hand until the forearm is horizontal, edge of the sword to the front, the right hand firmly grasping the gripe about three inches below the guard, at the same time grasp the right forearm near the elbow with the left hand, the left forearm along and in front of the right forearm, the thumb of the left hand over and supported by the right forearm near the elbow, fingers of the left hand extended and joined, the guard resting on the left arm near its elbow, the blade vertical, edge to the front.

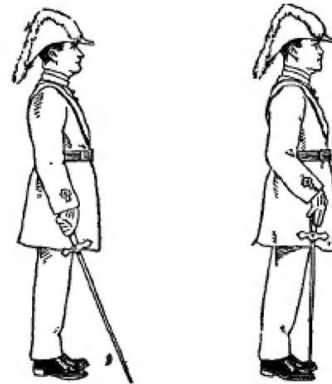


Seq. L- 95. 1. Carry, 2. SWORDS.

Bring the sword to the position of present, at the same time drop the left hand by the side. (TWO) Bring the sword to the carry. (Seq. D - Par. 89.)
NOTE – See picture at the end of Seq. B.

Seq. M - 92. 1. Order, 2. SWORDS.

Drop the sword point to the ground, blade inclined to the rear, back of blade to the front. (TWO) Bring the blade to a vertical position against the right toe, and place the hand on top of the hilt, three fingers in front of the gripe, thumb and little finger in the rear, elbow close to the body.



Seq. N - 130. 1. Un-, 2. COVER.

At the command Cover, take the chapeau by the front piece with the left hand. (TWO) Raise the chapeau from the head and place it on the right shoulder, slightly to the front, holding it in that position with the left hand.

NOTE-Uncover is never executed unless the swords are sheathed, at an order, or (with the right hand) when at a secure.



Seq. O - 131. 1. Re-, 2. COVER.

Replace the chapeau on the head. (TWO) Drop the hand to the side.

Seq. P - 49. 1. Stand at, 2. EASE.

Being at order swords, at the command EASE, carry the left foot 12 inches straight to the left, keeping the legs straight without stiffness, so that the weight of the body rests equally on both feet. At the same time incline the blade to the front by extending the right arm, without moving the point or changing the grasp on the hilt. Place the left hand behind the body, resting in the small of the back, palm to the rear, fingers together (as in hand salute) the body erect but not constrained. When resuming attention, return to the position of order swords.



Seq. Q - 48. 1. Commandery, 2. Attention.

Bring the left foot to the side of the right. Feet turned out equally and forming an angle of about 45 degrees. Knees straight without stiffness. Hips level and drawn back slightly; body erect and resting equally on hips; chest lifted and arched; shoulders square and falling equally. Drop the left hand to the side and carry the hilt to



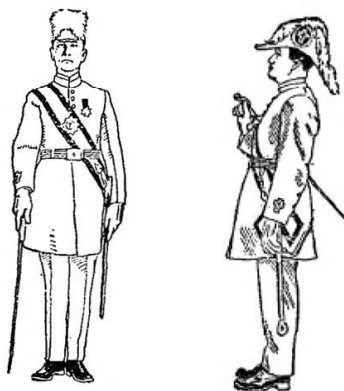
the right side, leaving the point undisturbed. Arms hanging naturally; left thumb along the seam of the trousers. Head erect and square to the front, chin slightly drawn in; eyes straight to the front. Weight of the body resting equally upon the heels and balls of the feet.

Seq. R - 93. 1. Carry, 2. SWORDS.

Resume the carry in one motion. **NOTE** – See picture at the end of Seq. B.

Seq. S - 102. 1. Reverse, 2. SWORDS.

Drop the blade forward and down until it is directed towards a point about one pace in front of the right foot, at the same time allow the fingers to grasp the lower part of the gripe and move the hand forward about 12 inches. (TWO) Carry the sword by a wrist movement so that the blade will swing to the rear, the point downward at an angle of about 45 degrees, the edge up. As the sword swings into position under the right arm pit, bring the hand in, grasp the gripe with the thumb and forefinger of the right hand, the other fingers front of the right armpit and successively curved, resting the blade between the right arm and the right side. The end of the hilt remains about nine inches in front of the right shoulder.



Seq. T - 103. 1. Carry, 2. SWORDS.

Bring the sword to the first position of reverse. (TWO) Resume the position of carry swords. **NOTE** – See picture at the end of Seq. B.

Seq. U - 109. 1. Invert, 2. SWORDS.

Drop the point of the sword directly forward about fifteen inches, grasping the blade (about nine inches from the guard) with the left hand palm to the front. (TWO) Release the gripe with the right hand and invert the sword with the left hand to a position about four inches in front of the center of the body, blade vertical, edge to the right, guard at the height of the chin, grasp the blade with the right hand at the height of the belt.



Seq. V - 110. 1. Carry, 2. SWORDS.

Release the right hand and swing the point of the sword forward and upward, at the same time lower the hilt to the right side and grasp it with the right hand (first position of invert). (TWO) Place the sword in the position of carry, the left hand at the right shoulder, turning the hand. (THREE) Drop the left hand to the side. **NOTE** – See picture at the end of Seq. B.

Seq. W - 111. 1. Guide, 2. SWORDS.

Bring the sword vertically in front of the center of the body, the right hand as high as the neck and six inches in front of it, back of the gripe to the right, at the same time clasp the left hand over the right, elbows close to the body.

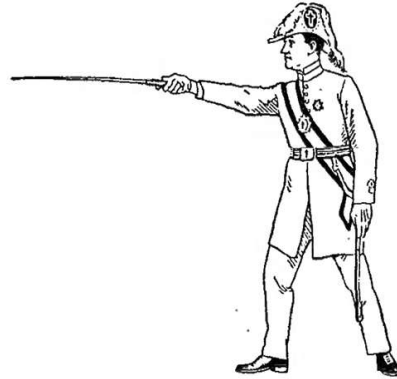


Seq. X - 111. 1. Carry, 2. SWORDS.

Resume the carry in one motion. **NOTE** – See picture at the end of Seq. B.

Seq. Y - 128. 1. Charge, 2. SWORDS.

Turn on the left heel, placing the toe square to the left; at the same time plant the right foot forward with a slight shock about eighteen inches, the feet being at right angles, the weight of the body resting on the right foot. At the time of planting the feet extend the arm to its full length, at the height of the shoulder, back of the hand down, the blade in prolongation of the arm and pointed at the opponent's breast.



Seq. Z - 129. 1. Carry, 2. SWORDS.

Resume the position of attention at carry swords.
NOTE – See picture at the end of Seq. B.

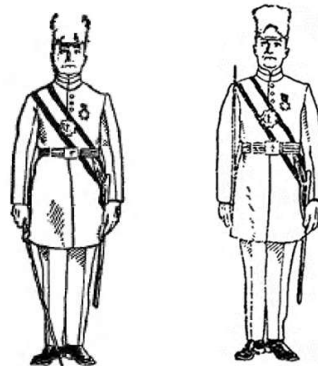
Seq. AA - 106. 1. Parade, 2. REST.

Being at the carry or order swords. Drop (carry) the sword point to the ground in front of the center of the body on a line with the left toe, edge to the right, the palm of the right hand resting on the end of the hilt; the thumb and fingers extended and joined against the gripe, the left hand clasped over the right; at the same time carry the right foot six inches straight to the rear, the left knee slightly bent, the body erect, Par. 49.



Seq. BB - 107. 1. Commandery, ATTENTION, 2. Carry, 3. SWORDS.

At the command attention, bring the right foot to the side of the left; drop the left hand to the side, and carry the hilt to the right side, leaving the point undisturbed. At the command swords, resume the position of order swords in one motion. At the command swords, resume the position of attention at carry swords. **NOTE** – See picture at the end of Seq. B.



as either foot strikes the ground, take one step in quick time, and then step off in double time.

61. To resume the quick time: 1. Quick time, 2. MARCH.

At the command march, given as either foot strikes the ground, advance and plant the other foot in double time; resume the quick time, dropping the hands by the sides.

SEQ 7, 16

To Mark Time

62. Being in march: 1. Mark time, 2. MARCH.

At the command march, given as either foot strikes the ground; advance and plant the other foot; bring up the foot in rear and continue the cadence by alternately raising each foot about two inches and planting it on line with the other.

Being at a halt, at the command march, raise and plant first the left foot and then the right, as described above.

Any movement may be executed from mark time.

SEQ 8

The Half Step

63. 1. Half Step, 2. MARCH.

Take steps of 15 inches in quick time, 18 inches in double time.

64. Forward, half step, halt and mark time, may be executed one from the other in quick or double time.

To resume the full step from half step or mark time: 1. Forward, 2. MARCH.

SEQ 1, 2, 3, 4, 5, 6, 38

Side Step

65. Being at a halt or mark time: 1. Right (left) step, 2. MARCH.

Carry and plant the right foot 10 inches to the right; bring the left foot beside it and continue the movement in the cadence of quick time.

The side step is used for short distances only and is not executed in double time.

NOTE—The command halt is given when the feet are together; take another step, then halt.

right on the leading guide, who places himself on its right flank; the other threes oblique to the left till opposite their places in line, when each in succession marches to the front.

At the command halt, given when the leading three has advanced commandery distance, it halts, and dresses to the right; the other threes halt, and dress to the right upon arriving in line.

The guide in rear places himself on the left of the front rank upon the arrival of the last three in line; the fifth command is given when the last three completes its alignment.

If the movement is made toward the side of the file closers, they dart through the column at the command march.

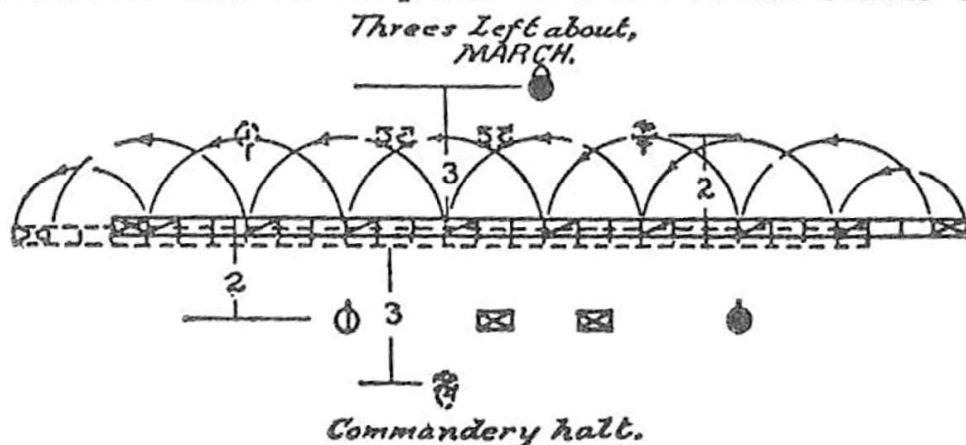
From column of sections in the same manner.

208. If marching in double time, or in quick time and the command be double time, the leading three moves to the front in quick time, the other threes oblique in double time, each taking the quick time, and former sword position, and dressing to the right upon arriving in line. This rule is general.

SEQ 10 11 To March the Line to the Rear

209. 1. Threes right (left) about, 2. MARCH, 3. Commandery, 4. HALT; or, 3. Guide right (left).

At the command march, the threes wheel about on fixed pivots; the Commander passes through the nearest interval and places himself three paces in front of the center of the



Back Step

66. Being at a halt or mark time: 1. Backward, 2. MARCH.

Take steps of 15 inches straight to the rear.

The back step is used for short distances only and is not executed in double time.

SEQ 2, 29, 39, 53**To Halt**

67. To arrest the march in quick time or double time: 1. Squad, 2. HALT.

At the command halt, given as either foot strikes the ground, plant the other foot as in marching; raise and place the first foot by the side of the other. If in double time, drop the hands by the sides.

To March By the Flank

68. Being in march: 1. By the right (left) flank, 2. MARCH.

At the command march given as the right foot strikes the ground, advance and plant the left foot, then face to the right in marching and step off in the new direction with the right foot. Execute by the left flank by inverse commands and means. (The right and left face in marching.)

To March To the Rear

69. Being in march: 1. To the rear, 2. MARCH.

At the command march, given as the right foot strikes the ground, advance and plant the left foot; turn to the right about on the balls of both feet and immediately step off with the left foot.

If marching in double time, turn to the right about, taking four steps in place, keeping the cadence, and then step off with the left foot.

SEQ 15**Change Step**

70. Being in march: 1. Change step, 2. MARCH.

At the command march, given as the right (left) foot strikes the ground, advance and plant the left foot; plant

To Turn on a Moving Pivot

196. Being in line: 1. Right (left) turn, 2. MARCH, 3. Forward, 4. MARCH.

At the second command the pivot Knight faces to the right in marching and takes the half step. The other Knights oblique to the right until opposite their places in line, then execute a second right oblique and take the half step on arriving abreast of the pivot Knight. The right guide pauses, turns to the right and conducts the marching pivot, see Par. 22; all take the full step as the last Knight arrives on the line, at the fourth command.

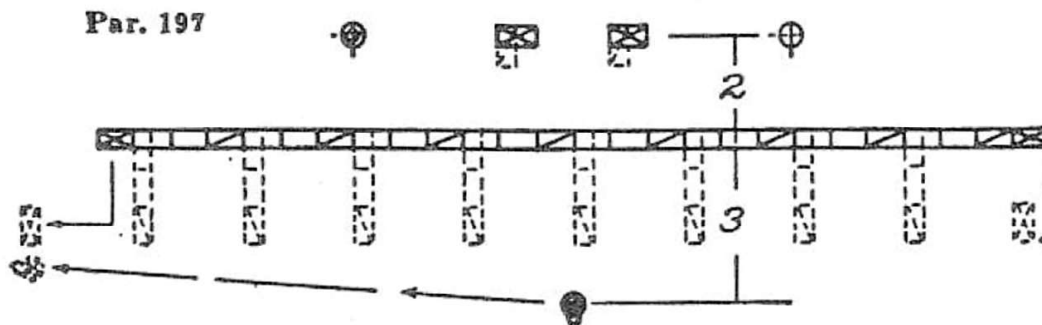
Right (left) half turn is executed in a similar manner; the pivot Knight making a half change of direction to the right or left, and the other Knights making quarter changes of direction in obliquing.

At the command halt, which may be given at any time after the movement begins, only those halt who are on the new alignment, the movement being completed as explained.

SEQ 13 48 To Form Column to the Right or Left

197. Being in line: 1. Threes right (left), 2. MARCH.

At the command march, each three wheels to the right on a fixed pivot; upon the completion of the wheel the threes take the full step without further command, guiding to the left (marching flank). The guide of each three (the Knight on its left) preserves the distance of fifty-four inches from the three in his front (from breast to back). The right guide places himself fifty-four inches in front of the left file of the first three, and marches on a line parallel to the former



To resume the direct march: 1. Forward, 2. MARCH.

The guides, during the oblique, cover in trace parallel to the original direction.

If halted while obliquing, the swords being at a position other than carry, the Knights will, upon halting, bring their swords to a carry and halt faced to the front.

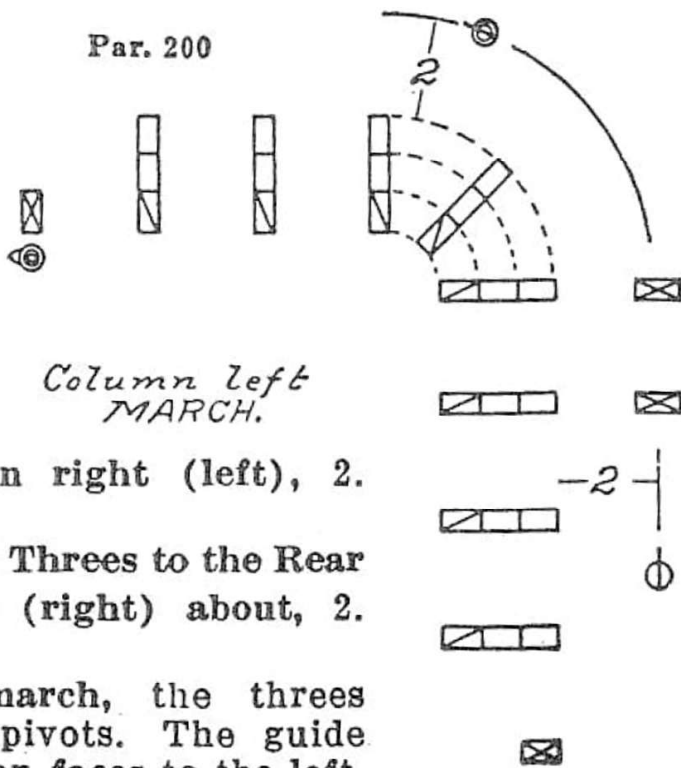
If the command mark time be given while obliquing, the oblique march will be resumed by the command: 1. Oblique, 2. MARCH. **SEQ 14, 18, 19, 26, 27, 42, 43, 44, 49,**

To Change Direction in Column of Threes or Sections

200. Being in march: 1. Column left (right), 2. MARCH.

The leading rank wheels on a moving pivot, the wheel being completed, the guide takes his position. The other ranks move forward and wheel on the same ground.

Column half right (left) is similarly executed.



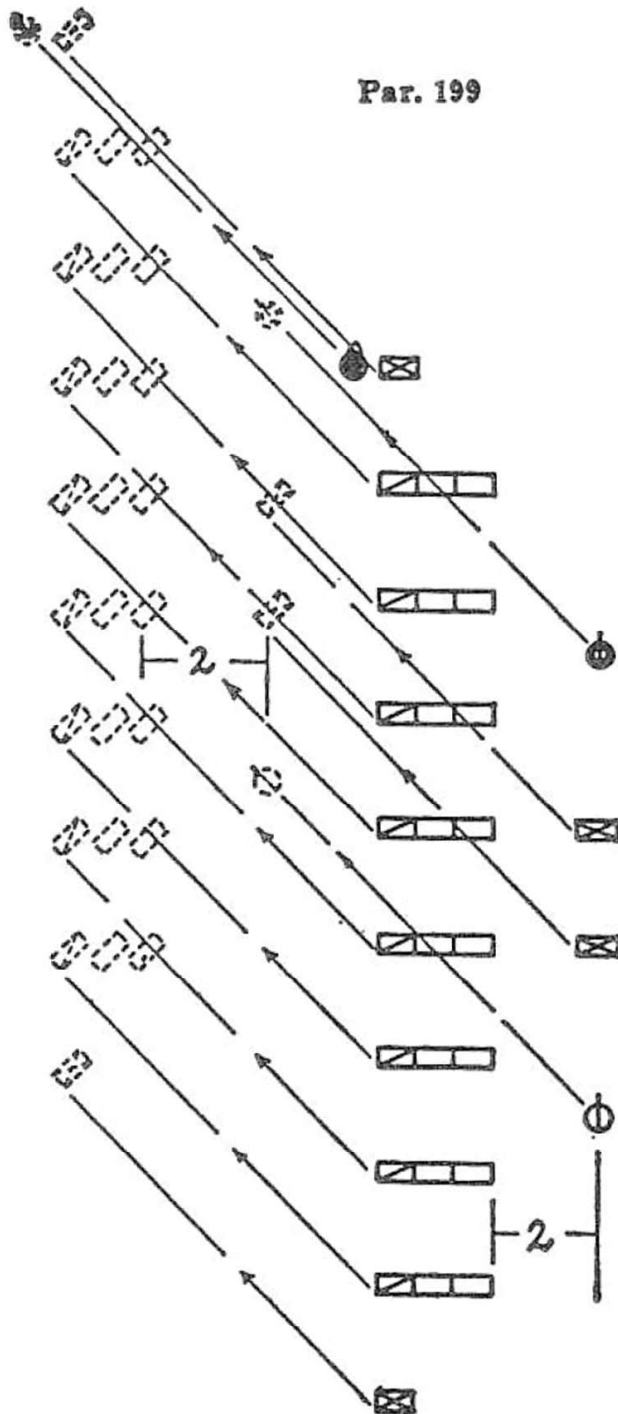
201. To put the column in march and change direction at the same time: 1. Column right (left), 2. MARCH.

To March the Column of Threes to the Rear

202. 1. Threes left (right) about, 2. MARCH.

At the command march, the threes wheel about on fixed pivots. The guide at the head of the column faces to the left, and on the completion of the about, places himself in rear of the file on the marching flank of the rear three. The guide at the rear of the column faces to the left, and on the completion of the about, places himself in front of the file on the marching flank of the leading three. The file closers gain

to the front, shortening the first three or four steps (half step), the right guide places himself in front of the left file



of the right three; the other three wheel to the right on fixed pivots; the second three, when its wheel is two-thirds completed, wheels to the left on a moving pivot, and follows the first three; the other three, having wheeled to the right, move forward and wheel to the left on moving pivots, on the same ground as the second three.

Column of sections may be similarly executed by the command, 1. Right by Sections, 2. MARCH. Section chiefs giving necessary commands.

To Oblique in Column

199. 1. Left (right) oblique, 2. MARCH.

During the oblique, the different subdivisions preserve their parallelism; the Knight in each rank, on the side toward which the oblique is made, is the guide of that rank. The leading guide is guide of the column when the oblique is toward his flank; when the oblique is toward the opposite flank, the guide of the leading subdivision is the guide of the column.

The length of the full step in double time is 36 inches; the cadence is at the rate of 180 steps per minute.

The instructor, when necessary, indicates the cadence of the step by calling, one, two, three, four, or, left, right, the instant the left and right foot, respectively, should be planted.

57. All steps and marchings and movements involving march are executed in quick time unless the Knights are marching in double time, or double time be added to the command; in the latter case double time is added to the preparatory command. Example: 1. Squad right, 2. Double time, 3. MARCH. (Similarly for common time.) Quick time may be resumed from double time or common time. Example: 1. Quick time, 2. MARCH.

58. The command of execution for all movements while marching is given as either foot strikes the ground, except as otherwise prescribed; the movement commences when the following foot is planted.

SEQ 17

Quick Time

59. Being at a halt, to march forward in quick time: 1. Forward, 2. MARCH.

At the command forward, shift the weight of the body to the right leg, left knee straight.

At the command march, move the left foot smartly straight forward 30 inches, sole near the ground, and plant it without shock; next, in like manner advance and plant the right foot; continue the march. The arms swing naturally.

60. Being at a halt, or in march in quick time, to march in double time: 1. Double time, 2. MARCH.

If at a halt, at the first command shift the weight of the body to the right leg. At the command march, raise the forearms, fingers closed, back of the hands out, to a horizontal position along the waist line; take up an easy run with the step and cadence of double time, allowing a natural swinging motion of the arms.

If marching in quick time, at the command march, given

2. Rear threes left front into line, 3. MARCH, 4. Commandery, 5. HALT, 6. Right, 7. DRESS, 8. FRONT. Those threes having changed direction to the right, execute threes left at the command march; at the same time, the threes not having changed direction will execute left front into line.

The fifth command is given as the threes wheeling to the left unite in line; the rear threes successively halt, and at the seventh command dress upon the new alignment.

232. To form line to the right: 1. Threes right, 2. Rear threes left front into line faced to the rear, 3. MARCH, 4. Commandery, 5. HALT, 6. Left, 7. DRESS, 8. FRONT.

The threes which have changed direction wheel to the right, halt and dress to the left; the rear threes execute left front into line faced to the rear, the leading three obliquing to the left to obtain the necessary interval in which to execute the right about, Par. 241; the movement is completed as previously explained.

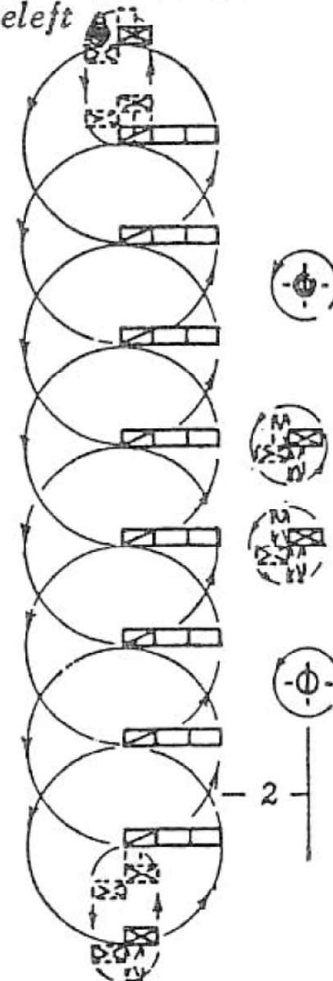
If the column has changed direction to the left, the line is formed by inverse commands and means.

SEQ 20 To Wheel in Circles

233. Being in column of threes: 1. Threes in circle, left (right) wheel, 2. MARCH, 3. Guide left (right).

At the command march, the threes wheel in full circle to the left on a fixed pivot. The leading guide faces to the left and marks time until the marching flank of the leading three passes him, when he again faces to the left, advances to within facing distance of the pivot, again faces to the left, marking time so as to conform to each quarter circle described by

Threes in circle left wheel MARCH.
Guide left



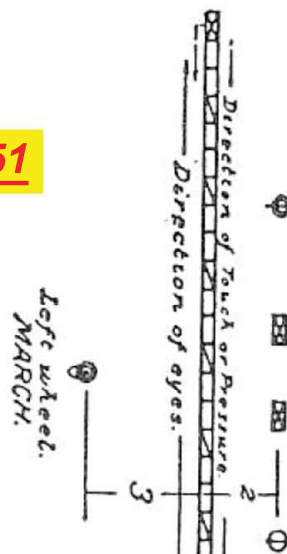
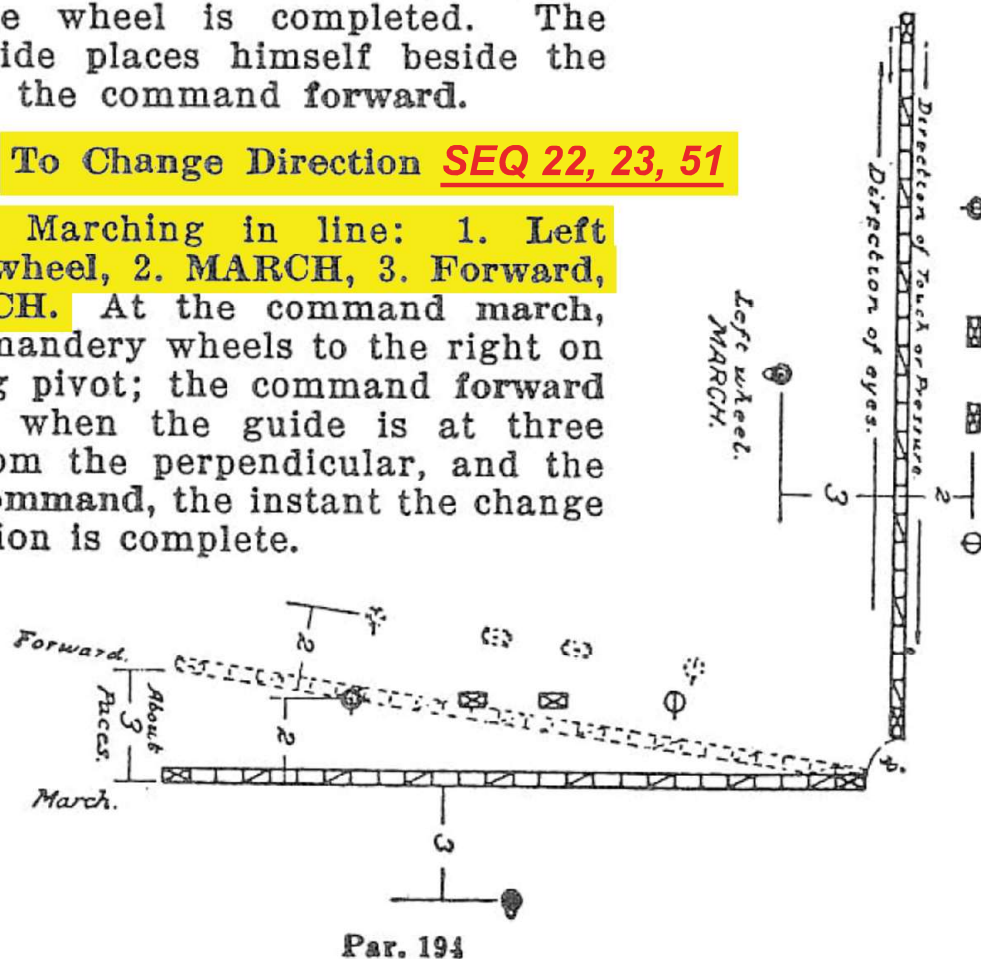
Par. 233

The Commander superintends the wheel, moves by the shortest line to a point commandery distance in front of the pivot Knight and faces to the late rear. The command halt is given when the left guide is about three paces from the perpendicular the left guide advances quickly, and places his left arm lightly against the breast of the Commander, who establishes him on the line. At the command dress, Par. 181, the Knights dress up to the line of the pivot Knight and the left guide. At the command front, the right guide places himself on the right of the pivot.

To continue the march upon completion of the wheel: 3. Forward, 4. MARCH. The command forward is given when the left guide arrives at three paces from the perpendicular, the command march, the instant the wheel is completed. The right guide places himself beside the pivot, at the command forward.

To Change Direction **SEQ 22, 23, 51**

194. Marching in line: 1. Left (right) wheel, 2. MARCH, 3. Forward, 4. MARCH. At the command march, the commandery wheels to the right on a moving pivot; the command forward is given when the guide is at three paces from the perpendicular, and the fourth command, the instant the change of direction is complete.



front of the commandery; the left guide follows at fifty-four inches in rear of the left file of the rear three; the file closers march at two paces from the flank of the column, on the side opposite to the guide, the platoon leaders opposite the centers of their respective platoons, the left guide of the first, and right guide of the second platoons are posted between the platoon leaders.

To form column of threes and halt: 1. Threes right (left), 2. MARCH, 3. Commandery, 4. HALT.

The fourth command is given the instant the threes complete the wheel.

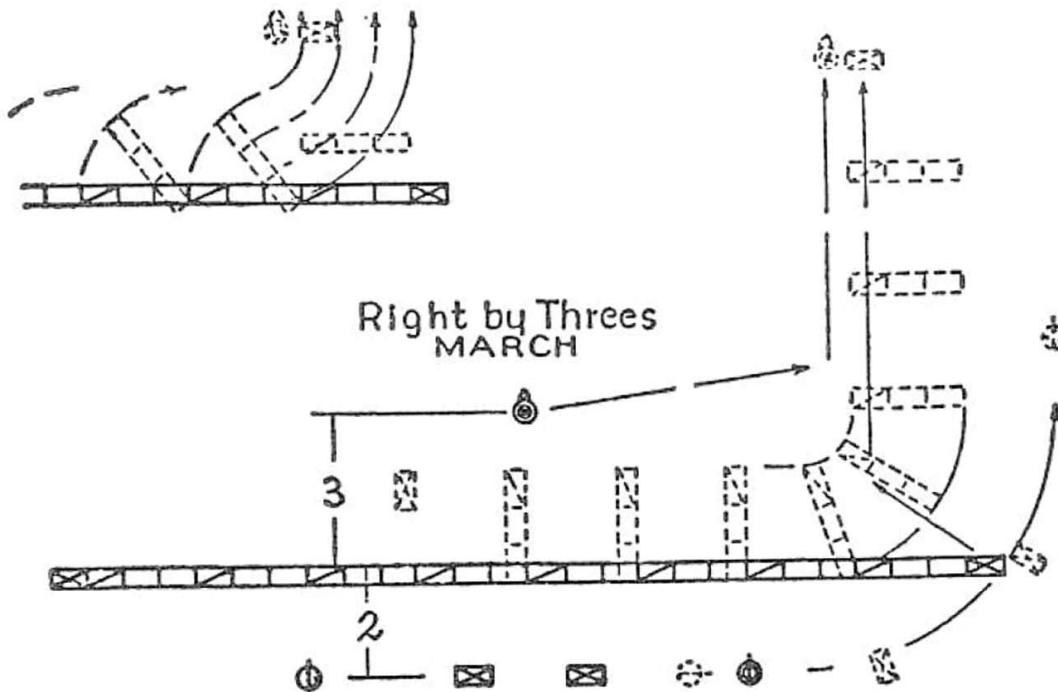
To form column of sections is similarly executed by the command: 1. Sections right (left) wheel, 2. MARCH.

SEQ 24 To March in Column of Threes to the Front

198. Being in line: 1. Right (left) by threes, 2. MARCH. At the command march, the right three moves straight

Position of Threes at end of second step

Par. 198



At the command march, the leading subdivision countermarches to the left; at the fourth command, given when the about is completed, it halts. The other subdivisions march a distance equal to their fronts beyond the wheeling point of the subdivision next preceding, countermarch to the left and halt at wheeling distance from the one in front.

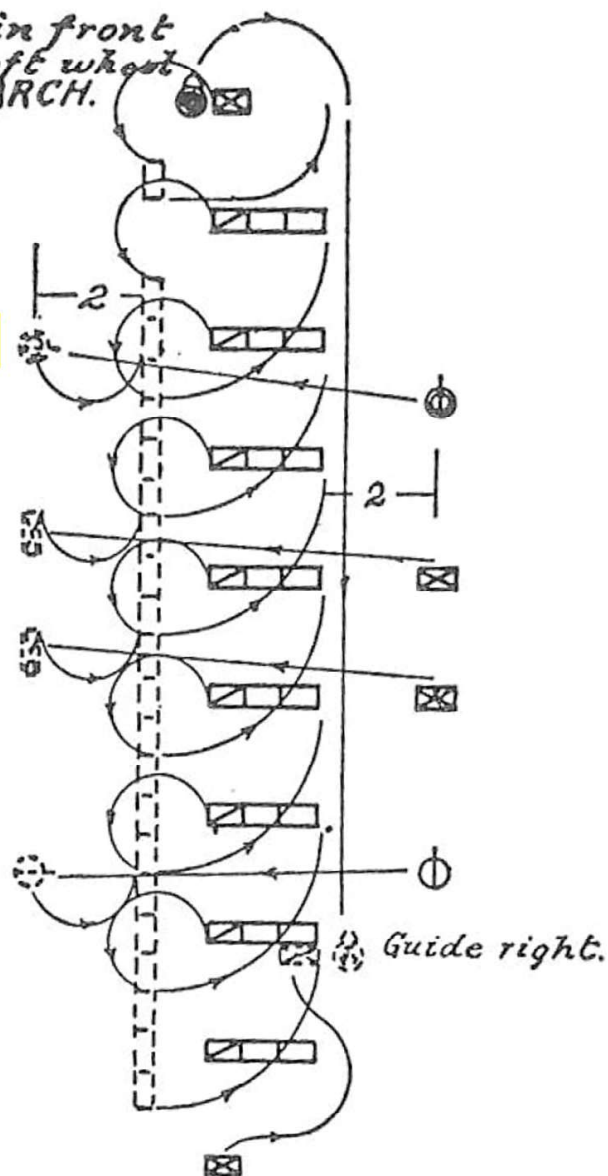
The Command-
er commands left
or right about,
according as the
right or left is in front.

To Invert the Column of
Threes or Sections

SEQ

25 306. Being in march right
in front: 1. Left in front, 2.
In circle left wheel, 3.
MARCH, 4. Guide right.

At the command march, the rear three marks time, the left guide taking post in front of the right file; the other threes wheel three-quarters of the circle to the left on moving pivots and mark time in line. The rear three resumes the forward march the instant the threes in front commence to mark time; when it arrives opposite the left file of the three next in front, that three wheels to the left and follows it; the other threes successively wheel to the left and follow the three next on its right as previously explained.



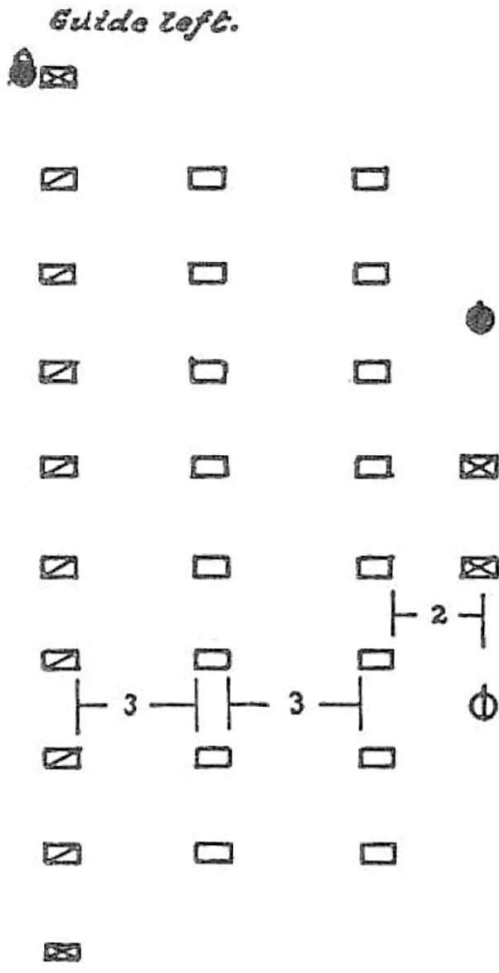
Par. 306

At the command march, the left center Knight stands fast, the Knight bringing his sword to guide swords; the wings face toward the center and close intervals as previously explained; the guide resumes carry sword.

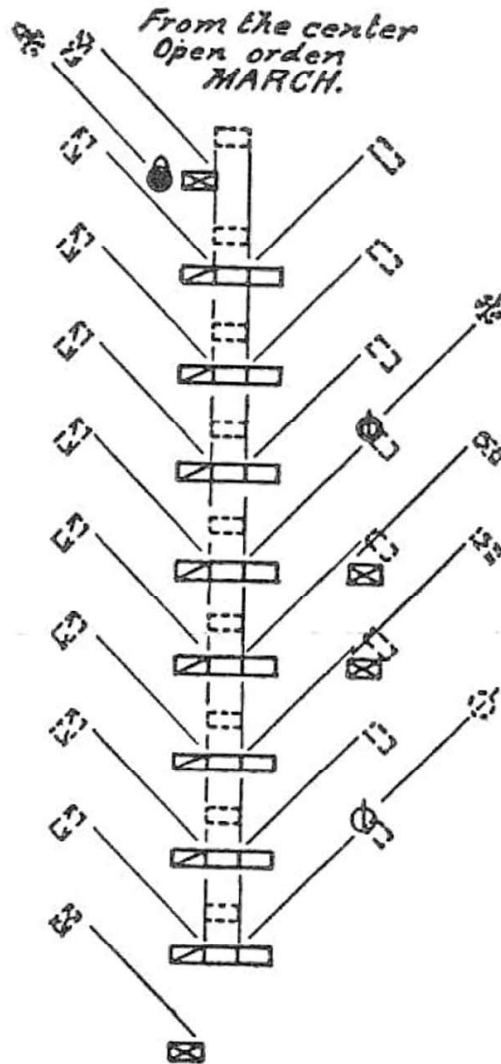
SEQ To Deploy Column of Threes in Open Order

28 227. Being in march: 1. From the center, 2. Open order, 3. MARCH, 4. Guide right (left or center).

At the command march, the center file of each three marches straight to the front at the half step; numbers one



Par. 227





Stand at Ease

1. Stand at, 2. EASE. Being at order swords, at the command "Ease" carry the left foot twelve inches straight to the left, keeping the legs straight without stiffness, so that the weight of the body rests equally on both feet. At the same time incline the blade to the front by extending the right arm, without moving the point or changing the grasp on the hilt. Place the left hand behind the body, resting in the small of the back, palm to the rear, the attitude erect but not constrained. This secures dignified uniformity while resting.

1. Parade, 2. REST. Carry the right foot 6 inches straight to the rear, feet at an angle of 45 degrees, left knee slightly bent; clasp the hands, without constraint, in front of the center of the body, fingers joined, left hand uppermost, left thumb clasped by the thumb and forefinger of the right hand; preserve front, silence, and steadiness of position.

50. To resume the attention: 1. Squad, 2. Atten-TION. (Given with accent on the last syllable, -TION).

Eyes Right or Left

51. 1. Eyes, 2. RIGHT (LEFT), 3. FRONT.

At the command right, turn the head to the right oblique (45 degrees), eyes fixed on the line of eyes of the Knights, in, or supposed to be in, the same rank. At the command front, turn the head and eyes smartly to the front.

SEQ 30 40

Facings

52. To the flank: 1. Right (left), 2. FACE.

Raise slightly the left heel and right toe; face to the right (a one-fourth turn), turning on the right heel, assisted by a slight pressure on the ball of the left foot; (TWO), place the left foot by the side of the right. Left, FACE, is executed on the left heel in the corresponding manner.

TO REFORM LINE

118. Being in two divisions facing inward: 1. Reform line, 2. Second division, about, 3. FACE, 4. Close ranks, 5. MARCH.

At the Command, REFORM LINE, the officers and guides proceed to their posts in line. At the command FACE, the second division executes about face and at the command, MARCH, the ranks are closed.



On Guard

119. 1. On, 2. GUARD.

Turn the left foot square to the left, turning on the left heel, and plant the right foot firmly about eighteen inches to the front, feet at right angles, the weight resting principally on the right foot, the shoulders oblique to the front, head and eyes square to the front. At the same time raise the sword hand on a line with lower part of the belt and about two inches from it, the guard three or four inches to the right of the belt clasp. Drop the sword diagonally to the left, the blade about 18 inches in front of the left shoulder, edge to the front, thumb on back of gripe. The sword held without constraint.

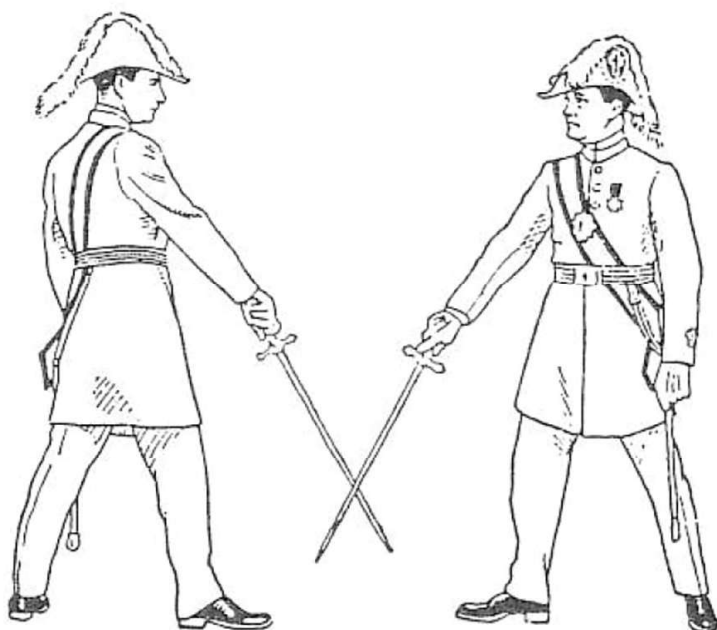
120. 1. Carry, 2. SWORDS.

Resume the position of attention at carry swords.

SEQ 32

Cuts or Parries

121. In giving the parries, first take the position on guard, keep the feet at right angles and look into the eyes



Parry Three

when parries, 1, 2, 3, and 4, or parts of same as required, will be executed by the proper commands. After each word the position of on guard will be resumed at the command: 1. On, 2. Guard.

123. 1. Carry, 2. SWORDS. **SEQ 33**

After each word is communicated, the position of on guard and carry swords will be resumed as follows: 1. CARRY, 2. SWORDS. At the first command, come to the position of on guard and at the command swords, bring the right foot back to the original line and resume the carry.

124. 1. Wield, 2. SWORDS. **SEQ 36**

Raise the sword to the second position of draw swords. Wield the sword four times in a circular motion to the left, stopping at the first position of wield swords.

125. 1. Carry, 2. SWORDS. **SEQ 37**

Resume the position of carry swords.

SEQ 35

To Form Arch of Steel

126. The commandery being formed in two lines, facing inward, and about three paces apart, at carry swords, the

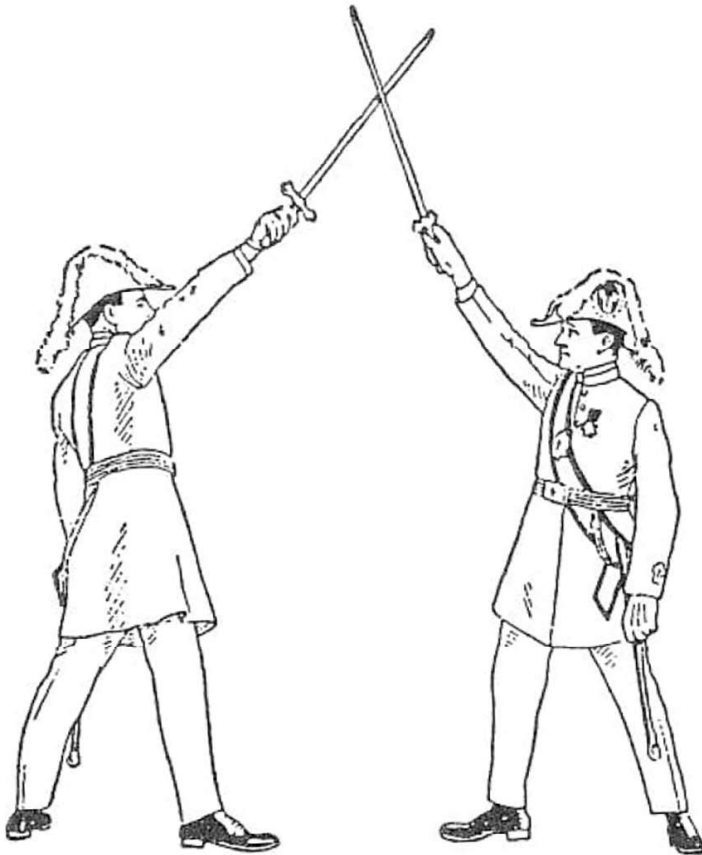
1. Parry, 2. FOUR.
Come directly to the position of Parry One.

122. The parries may be taught by numbers, but when a commandery is well instructed, they may be given, one division to another, by calling the number of the parry required, as follows: First Division ——— to the Second Division———.

1. On, 2. GUARD,

of the Knight opposite. The flats of the blades should be crossed about ten inches from the points, the sword arm straight; parries should be given with spirit but the swords touching lightly.

1. **Parry, 2. ONE.** Raise and extend the arm, back of the hand to the left and up, without changing the grasp, wrist as high as the head, the edge of the sword up, the blade in prolongation of the forearm, and engage the sword of the Knight opposite.



Parry One—Cross Swords

1. **Parry, 2. TWO.** Disengage the sword and describe a circular movement toward the rear and right, back of the hand down, edge of the sword down, the hand on a line with the head, and engage the opposite sword on the right side, crossing the blades as before.

1. **Parry, 2. THREE.** Disengage the sword and describe a circular movement toward the left and downward, engage the opposite sword on the left side, the point of the sword near the ground, the edge upward, the back of the hand to the left, and cross blades.

and three oblique to the right and left respectively, until each gains a distance of three paces from the center file, when they resume the forward march, the Commander giving the fourth command when all take the full step. The file closers remain on the flank of the column. **SEQ 41**

228. To march in close column again: 1. Close order, 2. MARCH, 3. Guide left (right).

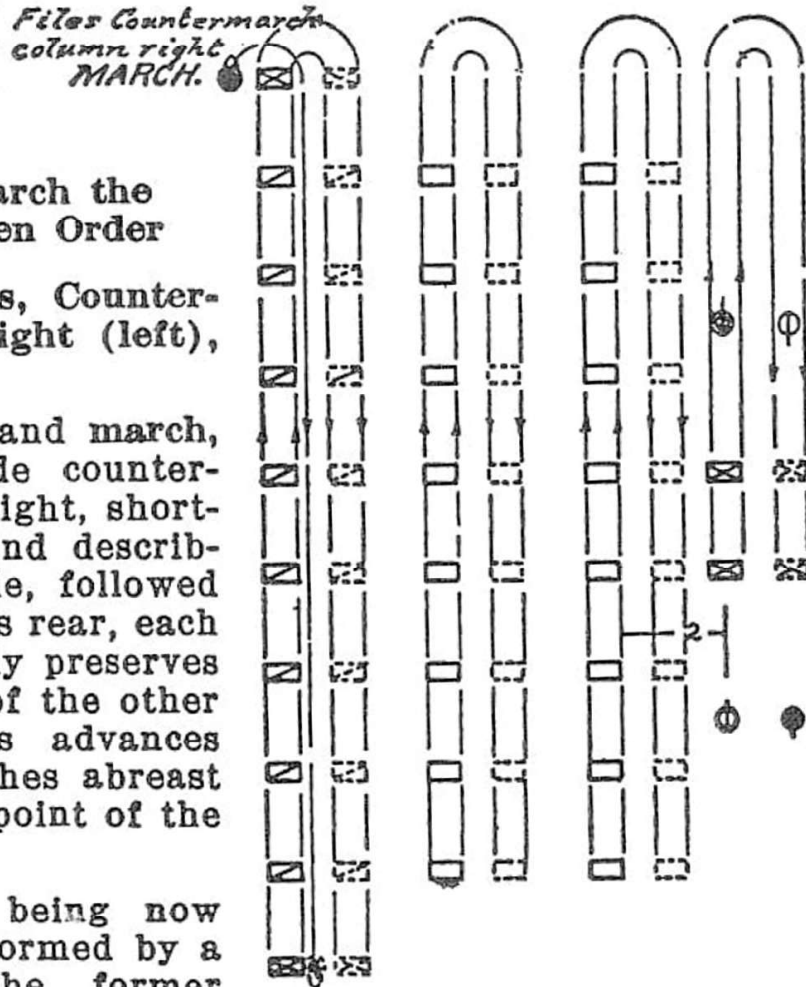
At the command march, numbers one and three oblique upon the center file which takes the half step; at the third command, all resume the full step.

To Countermarch the Column at Open Order

229. 1. Files, Counter-march, column right (left), 2. MARCH.

At the command march, the leading guide counter-marches to the right, shortening the step and describing a small circle, followed by the files in his rear, each of whom carefully preserves the trace; each of the other columns of files advances and counter-marches abreast of the wheeling point of the leading guide.

The threes, being now reversed, are reformed by a repetition of the former commands.



Par. 229

the three as the wheel is completed; the guide in the rear places himself on the left of the commandery; the guide is announced the instant the threes unite in line.

If the line be formed toward the side of the file closers, they close in to the flank of the column at the first command, and, at the command march, dart through the column.

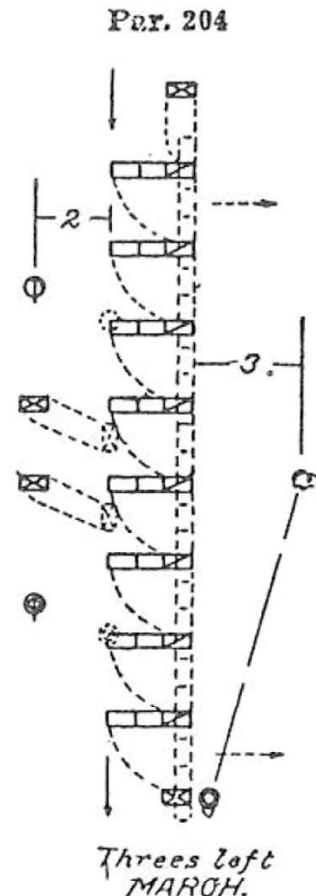
To form line from column of sections,
1. Sections right (left) wheel, 2. MARCH,
3. Commandery, 4. HALT, or, 3. Forward,
4. MARCH.

To Form Line on the Right or Left from
SEQ Column of Threes or Sections

45 205. 1. On Right (left) into line, 2. MARCH, 3. Commandery, 4. HALT, 5. FRONT.

At the command march, the leading three wheels to the right on a moving pivot, and moves forward, aligning to the right, the guide places himself on its right to conduct it; each of the other threes marches a distance equal to its front beyond the wheeling point of the three next preceding, wheels to the right, and advances as explained for the first three; the rear guide places himself on the left when the rear three arrives on the line. Sections execute successively right (left) turn.

At the command halt, given when the leading three has advanced commandery distance in the new direction, it halts, and dresses to the right; the other threes halt and dress successively upon arriving in line. At the fifth command, given when the left three completes its alignment, all the Knights turn their eyes to the front. If the movement be executed toward the side of the guide, each file closer follows the three nearest him, passing in front of the following three.



SEQ 47**To Reform Line**

221. To reform line: 1. Front into line, 2. MARCH, 3. Right (left), 4. DRESS, 5. FRONT.

At the command march, the leading line and guides halt; the others continue the march and successively halt upon arriving in line. The third line having halted, the Commander gives the remaining commands.

To Deploy by the Flank

222. Being in line at a halt: 1. By the right (left) flank, take intervals, 2. MARCH.

At the command march, the Knights face to the right, the guide taking up the march; the others successively take up the march on each alternate step, and carefully follow the trace of the guide, preserving a uniform distance from the file in front. When the left guide has his interval: 1. Commandery, 2. HALT, at which the Knights halt and face to the front.

Should the Commander wish to advance the line to the front without halting, he commands: 1. By the left (right) flank, 2. MARCH, 3. Guide right (left or center).

223. To extend intervals: 1. By the right (left) flank (to so many paces) extend intervals, 2. MARCH, when the movement is executed on principles just explained.

224. The line may be deployed from both flanks at the same time, by the commands: 1. By the right and left flanks, take intervals, 2. MARCH.

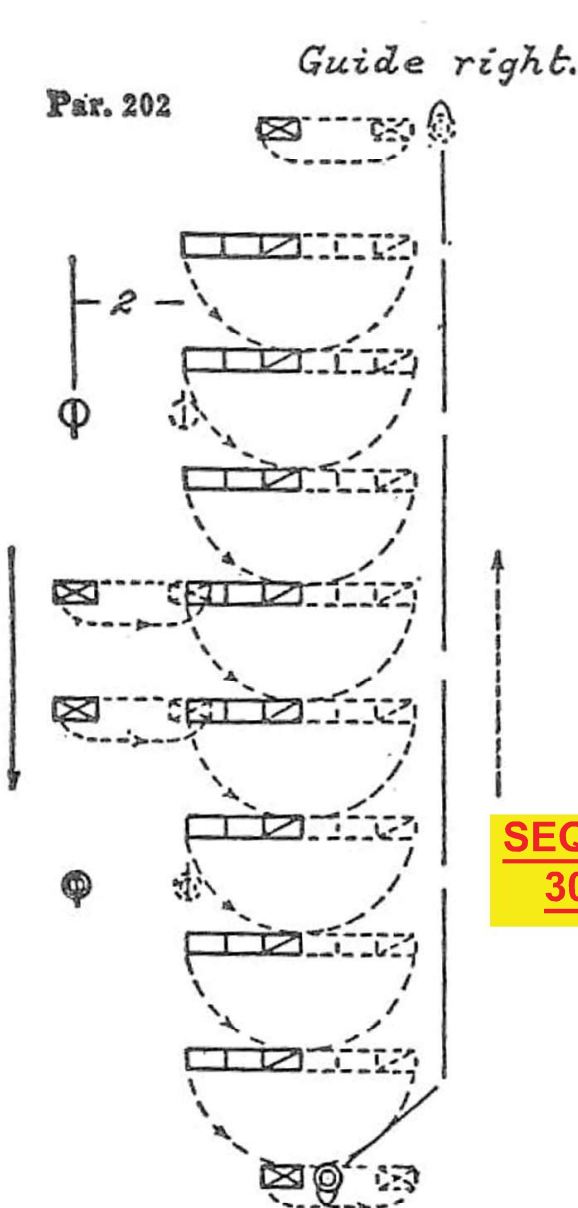
To Close Intervals by the Flank

225. 1. By the left (right) flank, close intervals, 2. MARCH.

At the command march, the left guide stands fast; the others face to the left, and stepping out together, close upon the left guide, successively halt and face to the front.

226. To close intervals toward the center: 1. On center, close intervals, 2. MARCH.

space to the left or right, necessary to preserve the interval of two paces from the flank of the column. The Commander faces about, and hastens to place himself on the right of the guide, at the head of the commandery. In column, the about is executed toward the side opposite the file closers.



203. Being in line, to perfect the commandery in wheeling by threes or sections: 1. Threes (sections) in circle, right (left) wheel, 2. MARCH.

The threes complete each arc of ninety degrees simultaneously. The principles of the fixed pivot are strictly enforced, the Knight on the marching flank taking the full step.

The threes having wheeled several times in circle: 1. Commandery, 2. HALT, or, 1. Forward, 2. MARCH.

To Form Line from Column of Threes or Sections

SEQ 30 204. 1. Threes left (right), 2. MARCH, 3. Guide right (left or center); or, 3. Commandery, 4. HALT.

At the command march, the threes wheel to the left on fixed pivots. The guide, if in front of the pivot, faces to the left, placing himself on the right of the leading three upon the completion of

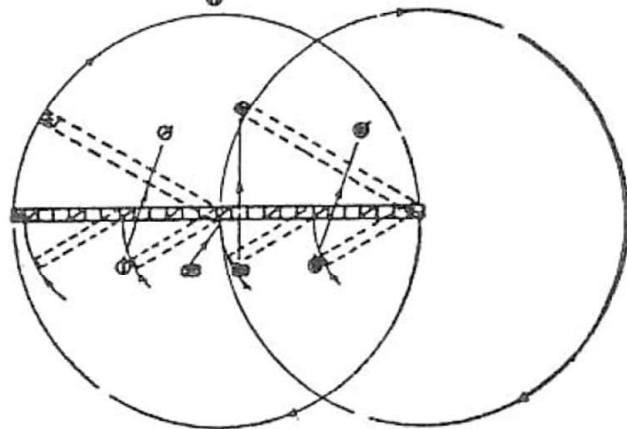
the wheel; if in front of the marching flank, he wheels to the left with the leading three, placing himself on the right of

SEQ 54**To Wheel Subdivisions in Circle Consecutively**

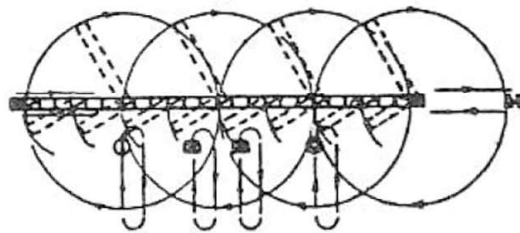
286. Being in line, to augment the subdivisions by wheeling them in circle consecutively: 1. Threes in circle right (left) wheel, 2. MARCH, 3. Sections, in circle right (left) wheel, 4. MARCH, 5. Platoons in circle right (left) wheel, 6. MARCH, 7. Commandery, 8. HALT, 9. Left (right), 10 DRESS, 11. FRONT, or, 7. Forward, 8. MARCH, 9. Guide left (right).

At the command march, the threes wheel in circle to the right on fixed pivots. The third command is given in time to add, march, the instant the threes reunite in line, when the sections wheel in circle to the right or left. In like manner, sections are augmented to platoons, and platoons to commandery, which also wheels in circle on a fixed pivot. The guides do not describe a circle, but march in prolongation of the line a distance sufficient to permit the subdivision in the rear to wheel clear of them. The guides face with each quarter of the circle, and

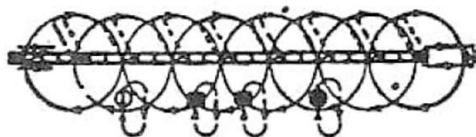
*Platoons in circle
Right wheel MARCH.*



*Sections in circle.
Right wheel MARCH.*



*Threes in circle.
Right wheel MARCH.*



Videos

*2017 KT Drill Competition - VA Grand Commandery -
Fredericksburg Commandery #1*

<https://www.youtube.com/watch?v=d6H4SpX2SO8>



*E-drill routine - Grand Commandery
of Knights Templar of Virginia*

<https://www.youtube.com/watch?v=kZ9EsyQl0jw&t=2s>

